

PICKETT KIT

DAYCAB '11-'15 PETERBILT 389

NEVER EXHAUST YOUR OPTIONS

389 50 Series Clamp

Our re-engineered clamp / pin / retainer clip assembly insures your system stays where it looks best, on your truck.

2X Series Spool

The innovation keeps coming with the next generation of spools from Dynaflex. Our 2X Series spools feature two of our classic taper loc's, and ensures all the junk coming out that tier 4 exhaust system stays inside your chrome pipes. The new spool comes with every 384 kit, and when combined with our chrome clamps, you get a classic feel with a modern twist.

Chrome Brackets

maybe the coolest feature of your new Dynaflex Z Series chrome kit are your chrome on chrome mounting brackets. Chrome mounts your chrome now.

Tailored Perfection

The new tier 4 exhaust system equipped 389 Peterbilt wasn't made for us Pickett lovers out there, that is, until we got our hands on it. The UNIBILT kit raises the bar on the whole chrome kit game and moves the DPF | SCR step forward the two inches required to fit that perfect looking 90 degree elbow. The day cab provided different obstacles than the 400lbs. step move, and led to a new custom engineered angle 1217|1317 BJ style clamp. It allows you to mount a RP elbow without moving anything. Look how perfect that fits.



50 Series: 389 Angle

Although our KRPP kit that moves the DPF step is unreal; take advantage of your Day Cab 389's ability to accommodate our Pickett system without moving the 400lbs. This custom engineered clamp throws your system back, and stuffs it perfectly between the box and DEF tank. Like every clamp by Dynaflex Products, these are chrome plated 304 stainless steel. Look for the DPI!

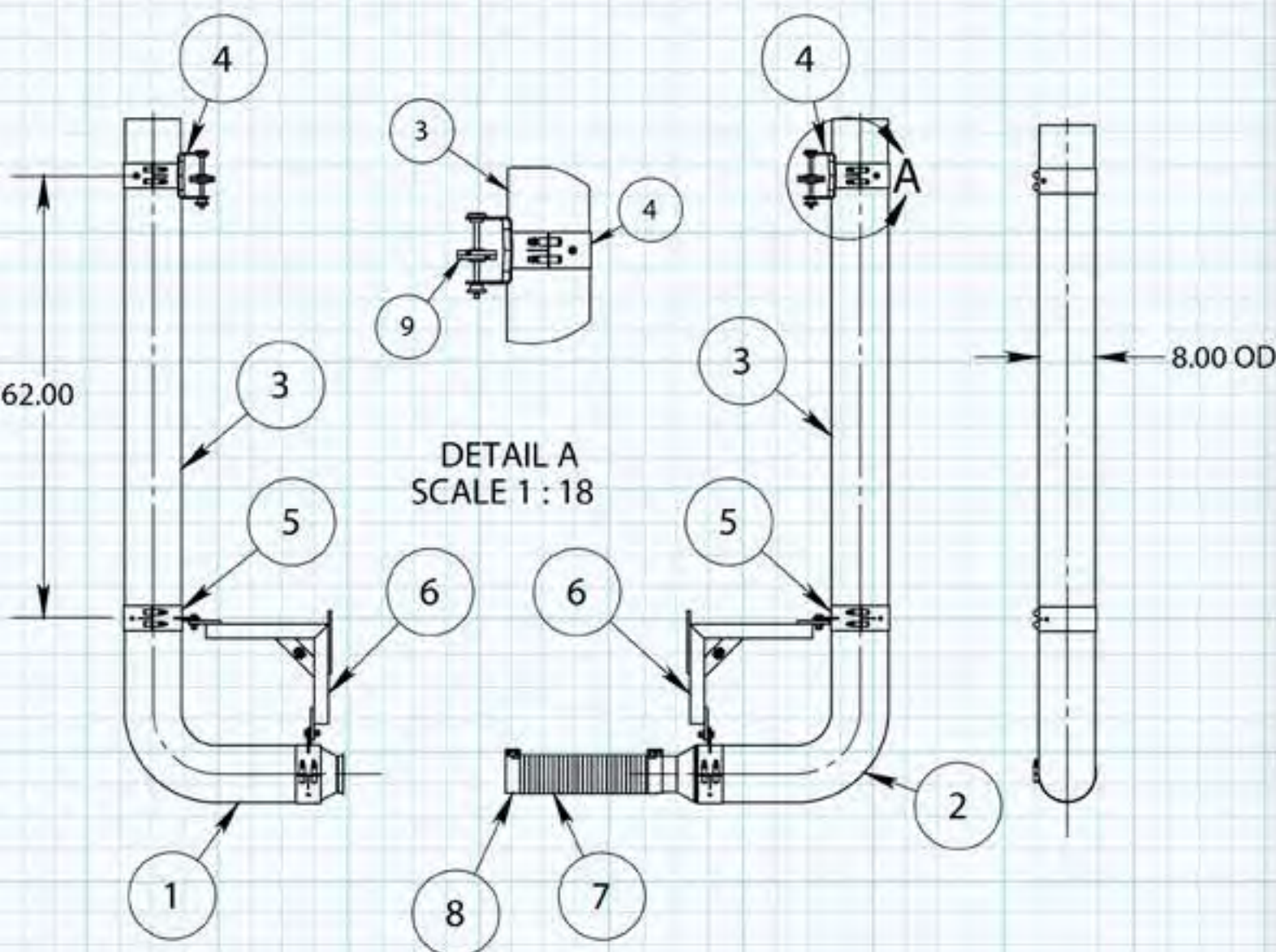


Dynaflex Chrome Brackets

That OEM frame bracket is not going to cut it. Luckily Z Series Kits give you everything you need...and we thought your chrome elbow should be mounted to two chrome clamps, which are mounted to a burley chrome bracket. These custom chrome on chrome brackets take you're exhaust to another level. A laser cut DP makes it easy to know your getting the original handcrafted chrome exhaust system. Made in the USA by Dynaflex.



7" KRPP705062CP-1
8" KRPP805062CP-1



ITEM NO.	PART NUMBER	DESCRIPTION	QTY.
9	14PAC-B6001009	BUSHING KIT	2
8	50TQ-5005	LAP JOINT EXHAUST CLAMP	2
7	53-500-18	FLEX 18" LONG	1
6	14PB-RP70XXCP	MOUNTING BRACKET, CARBON STEEL	2
5	50BJ-RP800SCP	8" MOUNTING CLAMPS, STAINLESS STEEL	4
4	50BJ-PBDC800SCP	8" PETERBILT DAY CAB, STAINLESS STEEL	2
3	24ZX-80062CP	8" OD MIDDLE SPOOL, CARBON STEEL, .075" THK.	2
2	14ZPB-RP70338050CP	8" ROD PICKET ELBOW, RIGHT SIDE	1
1	14ZPB-RP70328050CP	8" ROD PICKET ELBOW, LEFT SIDE	1

NOTES:
 1. DIMENSIONS ARE INCHES
 2. REMOVE ALL BURRS AND SHARP EDGES

DO NOT SCALE PRINT
 FOR PLATING ALLOWANCE MICRO FINISH AND GENERAL MANUFACTURING TOLERANCES NOT SPECIFIED ON THIS DRAWING.

UNLESS OTHERWISE SPECIFIED, THE INFORMATION CONTAINED IN THIS DRAWING IS THE SOLE PROPERTY OF DYNAFLEX PRODUCTS. ANY REPRODUCTION IN PART OR AS A WHOLE WITHOUT THE WRITTEN PERMISSION OF DYNAFLEX PRODUCTS IS PROHIBITED.

TOLERANCES EXCEPT AS NOTED INCH
 .XX .XXX
 ± .06 ± .030
 ANGULAR ±2°

DRAWN BY
 M. BAUTISTA
 PROD. MNG.
 APPROVAL
 APPROVAL
 D. INDELICATO
 PROJ. ENG.
 APPROVAL
 RS

DYNAFLEX PRODUCTS

DRAWING TITLE
 PETERBILT 389 DAY CAB

MATERIAL DESCRIPTION	SCALE	DEM NUMBER	SHEET #
SEE CHART	1:36	R: M66-7032-3221 L: M66-7033-3221	1 OF 1
FINISH SPECIFICATION	REV. LTR	DRAWING NUMBER	SIZE
CHROME	00	KRPP-805062CP-1	A

389 | X²
 DAY CAB SERIES
MONSTER STACK KIT
 DYNAFLEX PRODUCTS
 '11-'13 PETERBILT 389 X² SERIES // ROD PICKETT // DAYCAB MODELS

OVERALL HEIGHT GUIDE

SYSTEM LENGTH	11' 4"	12'	12' 4"	12' 10"	13' 4"	14'
TOP STACK LENGTH	36"	44"	48"	54"	60"	68"



Distributed By: THE ORIGINAL
 MONSTER STACKS SINCE 1972

Signature Series
 FROM DYNAFLEX PRODUCTS

AN#KRPP-DayCabTrifold