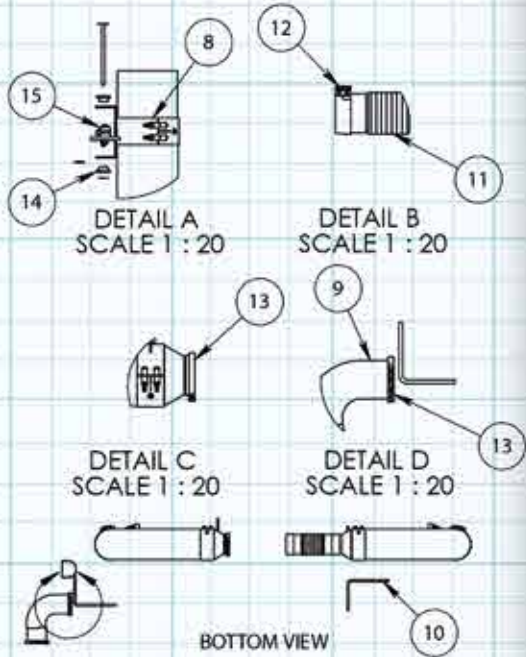
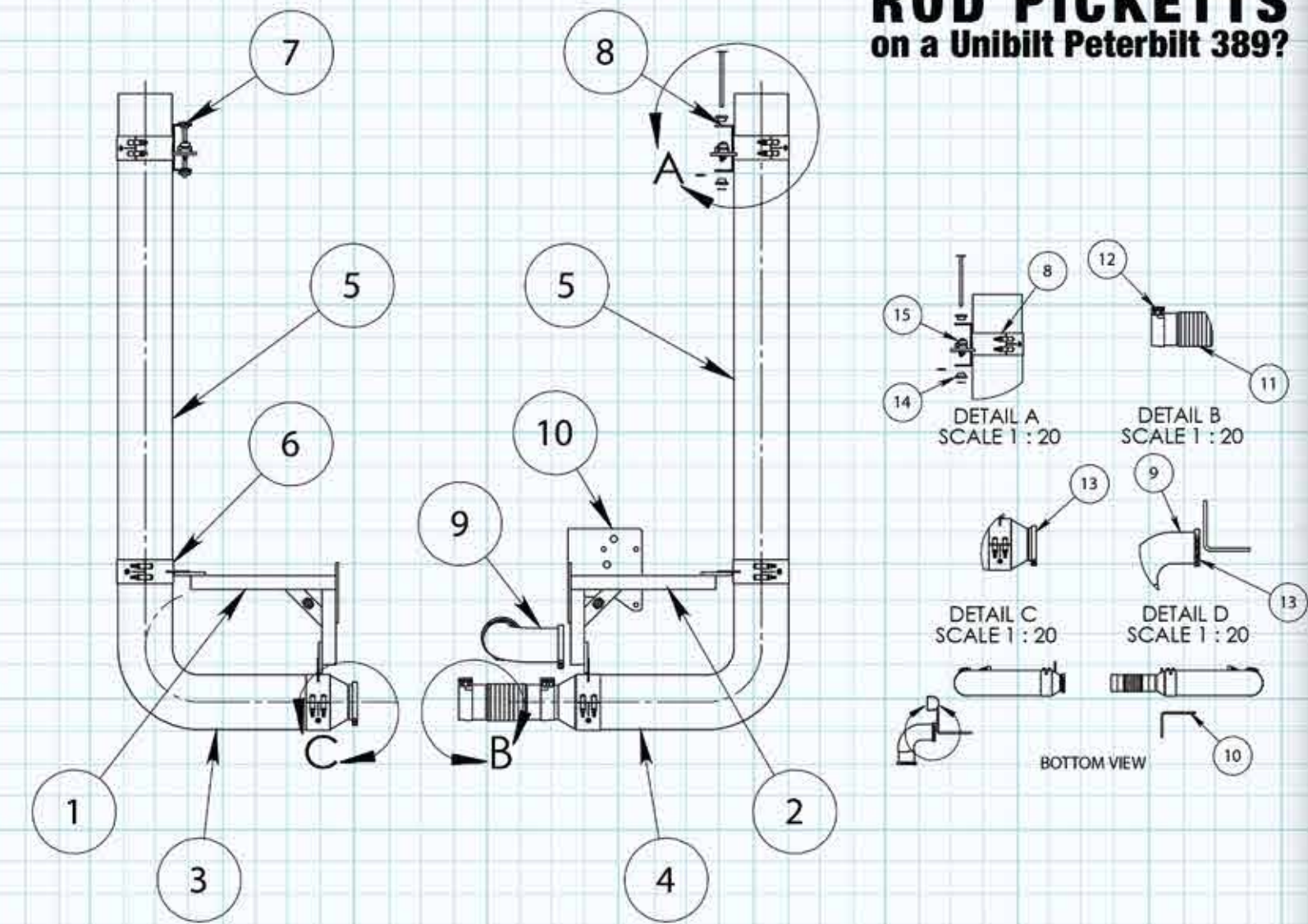


who said you couldn't put
ROD PICKETTS
on a Unibilt Peterbilt 389?



ITEM NO.	PART NUMBER	DESCRIPTION	QTY.
15	14RPP-BRK389SP	MTG BRKT KIT FOR RP, PETERBILT 2010	2
14	14PAC-B6001009	BUSHING KIT	2
13	77CUM-1003	5" GASKET, GRAPHITE WITH REINFORCE STEEL	2
12	50TQ-500AZ	LAP JOINT EXHAUST CLAMP	2
11	53-500-12	5" FLEX	1
10	14PB-FB38913B	389 PETERBILT BRACKETS	1
9	14PB-RP6882509	ELBOW, EXHAUST INLET, STAINLESS STEEL 409	1
8	50BJ-1317800SCP	389 CLAMP, PETERBILT 2012, TOP RIGHT SIDE	1
7	50BJ-1217800SCP	389 CLAMP, PETERBILT 2012, TOP LEFT SIDE	1
6	50BJ-RP800SCP	8" CLAMP BOTTOM	4
5	24ZX-80062CP	MIDDLE SPOOL PIECE	2
4	14ZPB-RP68798050CP	ROD PICKET ELBOW, RIGHT SIDE	1
3	14ZPB-RP68818050CP	ROD PICKET ELBOW, LEFT SIDE	1
2	14PB-RP6879CP	MOUNTING BRACKET ASSY, RIGHT SIDE	1
1	14PB-RP6881CP	MOUNTING BRACKET ASSY, LEFT SIDE	1

NOTES:

- DIMENSIONS ARE INCHES
USE OEM CLAMPS, NOT INCLUDED IN KIT.
DP # 09-8-002-221
- REMOVE ALL BURRS AND SHARP EDGES
- DO NOT SCALE PRINT
FOR PLATING ALLOWANCE MICRO FINISH AND GENERAL
MANUFACTURING TOLERANCES NOT SPECIFIED ON THIS DRAWING.

PROPRIETARY AND CONFIDENTIAL
THE INFORMATION
CONTAINED
IN THIS DRAWING IS THE
SOLE PROPERTY OF
DYNAFLEX PRODUCTS.
ANY REPRODUCTION IN
PART OR AS A WHOLE
WITHOUT THE WRITTEN
PERMISSION OF DYNAFLEX
PRODUCTS IS PROHIBITED.

TOLERANCES
EXCEPT AS NOTED
INCH
.XX .XXX
±.06 ±.030
ANGULAR ±2°

DRAWN BY
M.BAUTISTA
SEP/24/13
PROD. MNG.
APPROVAL
Q.A. MNG.
APPROVAL
D. INDELICATO
PROJ. ENG.
APPROVAL

DYNAFLEX PRODUCTS

DRAWING TITLE
389 PETERBILT KIT

MATERIAL DESCRIPTION	SCALE	OEM NUMBER	SHEET #
SEE CHART	1:40	R:M66-6879-1120 L:M66-6881-1120	1 OF 1
FINISH SPECIFICATION	REV. LTR	DRAWING NUMBER	SIZE
CHROME	00	KRPP-805062CP	A

DYNAFLEX CURVE
STRAIGHT
MITERED
BULL HAULER



THE ORIGINAL
MONSTER STACKS
SINCE 1972
WWW.DYNAFLEXPRODUCTS.COM

Signature Series
FROM DYNAFLEX PRODUCTS

OZZIE
EAGLE CLAW
TECH NINE
CHINO
TORO LOCO

389 | X²
UNIBILT SERIES
MONSTER STACK KIT
DYNAFLEX PRODUCTS
'11-'13 PETERBILT 389 X² SERIES // ROD PICKETT // UNIBILT MODELS

OVERALL HEIGHT GUIDE

SYSTEM LENGTH	11' 4"	12'	12' 4"	12' 10"	13' 4"	14'
TOP STACK LENGTH	36"	44"	48"	54"	60"	68"



Distributed By: **THE ORIGINAL**
MONSTER STACKS
SINCE 1972
FROM DYNAFLEX PRODUCTS

Signature Series
FROM DYNAFLEX PRODUCTS

PICKETT KIT

UNIBILT '11-'13 PETERBILT 389

NO DRILLING. NO FABRICATION. NO WORRIES.

389 50 Series Clamp

Our re-engineered clamp / pin / retainer clip assembly insures your system stays where it looks best, on your truck.

Step-Moving Brackets

So you want Rod Pickett elbows? Then your SCR/DPF system will need to move forward 2" to accommodate that nice looking 90. Luckily these two 1/4" thick plate brackets can handle that 400lb step. Don't cut, weld, or modify anything. Bolt these on and move on.

DPF Inlet Elbow

Crafted for your new system's placement on the frame, we make sure you have everything needed, even a new gasket!

Chrome Brackets

maybe the coolest feature of your new Dynaflex Z Series chrome kit are your chrome on chrome mounting brackets. Chrome mounts your chrome now.

Mounting Brackets

If you love the 90 degree elbow look of the Rod Pickett system, when you saw the 389 for the first time you may have been worried. How would a full 7" or 8" system fit in that little space? "If I could move that step a bit, this would work perfectly...". Well, we thought that as well and these mounting brackets were engineered to do just that. While still using existing mount points on your 389's frame, the mounting bracket was engineered to make sure you get the support you need and the style you deserve.



Sliding Clamp

The OEM clamps are weak. Pins shake off and clamps fail. We let engineering loose and, well, they did what they do. They improved the design. This clamp mounts directly to the OEM bracket using supplied adaptor plates and boasts a stronger connection and cotter pin assembly. A new swivel bushing and more durable support bushings come with the clamp assembly. This is one of the most tech clamps to ever leave our doors.



Dynaflex Chrome Brackets

That OEM frame bracket is not going to cut it. Luckily Z Series Kits give you everything you need...and we thought your chrome elbow should be mounted to two chrome clamps, which are mounted to a burley chrome bracket. These custom chrome on chrome brackets take you're exhaust to another level. A laser cut DP makes it easy to know your getting the original handcrafted chrome exhaust system. Made in the USA by Dynaflex.



7" KRPP705062CP
8" KRPP805062CP